

THE HARBORNE SOCIETY

**Number
Sixty Four
Summer 2008**



NEWSLETTER

www.theharbornesociety.org.uk

The Harborne Society's campaign has continued unabated and we are thrilled to be able to report that a major advance has been agreed towards securing the redevelopment of the Swimming Pool on the existing site in Lordswood Road as fought for by the Society and as overwhelmingly supported by the local community.

ALL BEING WELL A NEW POOL & FITNESS CENTRE COULD BE OPEN AT THE END OF 2011!

The position this time last year was that the City Council after years of delay and dithering had authorised Urban Design, the Council's own architects, to produce design options and estimates for redevelopment on the existing site and for a Business Case to be prepared by consultants Capita Symonds, all of which was to be completed by the end of last September.

The designs were submitted to the Ward Committee on 30th October but the Business Case failed to materialise. No explanation was given and we were merely told that it would be unlikely to be available until Easter 2008! Four options were presented. One was agreed as being impracticable but the remaining options were excellent, met the challenges posed by the site and allayed the Society's fears that the scheme might become too big by including non-recreational services. The options were based on a 25 metre pool, a learner pool, a fitness gym, which would also include an 'Ice Gym' for 8-16 year olds, a multi-use room suitable for dance, aerobics and martial arts, and a training/meeting room together with staff facilities and viewing area. The smallest option [£9.7m] was for a partial 2-storey building.

The principal difference for the second option was the inclusion of offices for the Edgbaston Constituency and was partial 3-storey with the third option having a larger fitness gym in lieu of the offices. These two options were both estimated at £11m. There was, however, a worrying complication, namely the disclosure that two private companies had approached the Council about the proposed new facil-

ity but the nature of the approaches was not divulged.

At the Society's request all three options were put out for public consultation which was carried out during December and January but the proposed consultation with user groups promised by the Council mysteriously never happened.

The consultation showed 67% support for option 3, the Society's preferred option.

Easter came and went ~ no report from the consultants and silence from the Council. The Society became increasingly worried that a secret deal was being developed which would not see the new pool on the existing site but elsewhere, possibly even on one of the locations previously rejected so resoundingly by residents. Consequently at the Ward Committee on 31st March we sought answers to eight specific questions as to whether the consultants had been looking at other sites, about the offers made by the private interests and the outcome of any negotiations with them, the public availability of the consultants' report when it emerged and the timetable for considering the matter. The Committee declined to let officers answer the questions, indicating that there would be a full presentation by the consultants to the Ward Committee on 12th May.

At that meeting consultants Capita Symonds made a PowerPoint presentation which, to put it mildly, was rushed and garbled. They had not in fact produced the Business Case as we had always been led to believe was the intention but reported on a "Site Development Recommendation for the replacement of Harborne Pool" i.e. they had yet again considered the question of location despite the local community firmly believing that that issue had been settled in May 2006 following public consultation on that specific point.

The consultants' findings were that the existing site in Lordswood Road was the

HARBORNE SWIMMING POOL SURGING AHEAD!



most appropriate location for the community facility to serve Harborne and the wider Edgbaston Constituency.

This was of absolutely no surprise to the Society as it has always been our very strongly held view from the start of our campaign. The consultants' findings were based on design option 3 as supported in the public consultation although they had sought advice from architects specialising in swimming pool design and had slightly modified the layout, increased the pool width to six lanes and increased the number of adult fitness stations to increase potential income. The £10.9m estimated cost is based on a start on site in early 2010 with the pool being closed for 22 to 30 months and completion by late 2011 or early 2012.

The Ward Committee's acceptance of the consultants' recommendation represents a massive leap forward, a real turning point, but there is still a long way to go. The matter now has to be considered through the Council's procedures and the Cabinet and funding has to be secured. This will not be easy as it will be handled by what is called the "corporate centre" whose shadow has hung over this project from the outset and has been responsible for much of the delay.

If there is the political will to redevelop the swimming pool then it will happen and we firmly believe that that will now exist. After a number of false starts the redevelopment scheme is beginning to surge ahead.

Phil Stokes

TECHNICAL OFFICER'S REPORT FOR JUNE 2007 - MAY 2008

This is taken from the report delivered by Ann Yorke, Technical Officer for the Society's 2008 A.G.M. summarising the activities and concerns of the Technical Committee since last year's A.G.M.

Another interesting year with new challenges and amendments to the Planning Bill from the Government. The time limit for Planning appeals for minor developments has been reduced to 8 weeks and in some cases appeals are to be considered by a panel of local councillors. Complete madness - the very people who have refused an application, the planning committees, are now to be asked to revise their opinions. The new 1App planning application forms came into use on 8 April and, as far as I can see have caused such confusion amongst agents submitting applications that the numbers received have dropped dramatically - which just means that I spend less time in the Library. However a large number of refusals in the past have been due to ill prepared applications and the new validation criteria will hopefully put a stop to that. There has also been an 11% increase in the Householder Planning fee from £135 to £150. Planning Approval now lasts for 3 years not 5 years.

Unfortunately the Government cannot be persuaded to amend the edict that back gardens are brownfield sites and therefore ripe for development. I did a round robin last November asking for members to write to their MP's and a number of you responded. Thank you. Unfortunately it didn't change anything and our gardens are still vulnerable.

Listed Buildings are now to be categorised in a different manner, the classifications will remain the same but English Heritage are to be involved. As a matter of some interest I have now been waiting for 12 months for the Listed Buildings, Buildings at Risk and the Harborne Tree Preservation Orders lists which I requested from the Conservation Officer and it doesn't seem to matter where I accost him, be it in church, the High Street or at various meetings on which we both sit, I still get no joy. I have actually given up caring from which department they are supposed to come now. Much to my delight I did receive a map of the Harborne Tree Preservation Orders two months ago but as these were shown as green areas on an A4 sheet and didn't list the trees - need I say more?

I understand that there are about 2,000 Listed Buildings in Birmingham and the majority of those are owned by the City Council - God help Birmingham if they treat them in the same manner our Georgian houses were treated. I do understand that there are some very interesting urinals on that list by the way.

Still on the planning front we are girding our loins to start the fight for some decent town

planning with the redevelopment of the Attwood House site. This is likely to start in 2010 when the leases fall in on the shops. We saw, in November, some preliminary proposals which appalled us. They simply remove one brick box and replace it with another, albeit with residential units in lieu of offices on the floors above - and the elevations.....well!! Mind-boggling is an insufficient expression of horror. Getting developers to see further than their bank balances is a very difficult job but we sincerely hope that the planners can be made to see reason. We are determined to make every effort and will definitely need your support along the way.

There have again been 180 new Planning applications for Harborne Ward in the last 12 months. Of these 23 have been refused and the rest approved or withdrawn. Much to our amusement some have been refused when we have considered that they should not be and much to our dismay many have been approved when, equally, they should not have been. But as can be seen from these statistics, we are still not winning either the battle of the two storey side extensions or the use of the Mature Suburbs document. The village is still becoming more and more hemmed in by terraces of houses in areas where they were never intended. There are two appeals going on at the moment for the Vine Public House site and for the removal of Jennings Fish Stall. Incidentally the old Andy Cash unit did become an independently owned wine shop, manned however by apparently teetotal staff.

Incidentally, the 'Mature Suburbs, Telecommunications and Large Format Banners' document has now gone through the Cabinet and been approved. Please use it whenever you can in letters of objection. Also there has been no change to the Playing Field Direction [1993] The existing 'Call-in' powers require the Local Planning Authorities to refer cases which they are minded to approve where Sport England have objected because of existing or resultant deficiencies of playing fields, and where alternative provision is not equivalent in terms of quantity, quality or accessibility.

Moorpool Estate - The Moorpool Estate plans have finally been submitted amidst a furore of accusations, denials and general dissatisfaction from the residents on the Estate. As I have continually stated the Society can only comment of the proposals as they are shown to us. We have no objection in principle to the development and have fought long and hard to have the proposals reduced from the horrific 115 units, mainly flats, down to the present modest 16 houses. I would point out that when I joined the Harborne Society in about 1995 determined efforts were being made by the Society to ensure that the Estate retained its unique character by the opposition

to inappropriate development. However it was not until the Society became determined to get an Article 4 [2] Direction added



to the Conservation status that matters at last seemed to be coming under some better, if at times rather bizarre, control - viz: one application for a satellite dish which was subjected to so many restrictions that when it was finally approved it was sited in a position which meant that it was of no earthly [excuse the pun] use to the householder. Grainger's proposals to hand over the public buildings to a community trust have now fallen through, they have moved their offices and have left Mick O'Malley in charge of a very reduced Estate Office in Moorpool Hall.

Birmingham Conservation Trust - I attended the Birmingham Conservation Trustees meetings on a regular basis. We are very fortunate to be able to be represented on the Trust. The Trust is actively pursuing the development and funding of the Newman Brothers Coffin Fittings Factory at present. The archiving is now completed and a scheme prepared for the project. The Trust has also been asked to look at the silversmiths works and we also provide and sell our management skills to other projects such as Perrott's Folly.

Planning Control Householder User Forum
I represent the Society, as well as my own practice, on these three monthly meetings. The performance indicators for the Householder Planning Team are now 83% of all applications being dealt with within the statutory 8 week period - not bad when you consider that there are often some 2,500 householder applications in a year across the city. Many of you will by now be aware that the Government, bless its little cotton socks, have in their wisdom put out a White Paper on planning reform which will mean that householders may no longer have to apply for planning permission to build a small extension or install solar panels and wind turbines. However applicants will qualify for the fast track system only if their plans have 'no or low' impact on the area in terms of their visual appearance or the overlooking of neighbours. And quite who is to make those decisions remains one of life's little mysteries. Planning approval is also projected in September for the laying of hardstanding for parking to the fronts of houses. Not gravel, which allows the rainwater to soak in but tarmac, blockwork and the like. Greenfield Road is like a river in heavy rain these days.

Planning Aid - I am now a 'friend' of Planning Aid. I have also put a copy of the Planning Aid pack into the Library. Please do not remove it. It has various leaflets inside which give directions on who, how, why and where planning matters can be dealt with. A useful document.

Greenfield Road Conservation Area - I no longer despair. After 20 years plus we now have an answer. The Conservation Area has now passed through Planning and will be announced as approved at the July Ward Committee meeting. I am busily eating my hat at the moment. I knew that there would be some delay after I had met Steven King, Conservation Officer, informally in October 2007 and he had informed me that it had lost its priority status. However I did not expect there to be another nine months before a decision was finally reached. The expected elation has long passed me by.

A few other things have been happening, such as chasing up the proposals for using plastic road signs to replace the stolen cast iron versions and getting rubbish removed from the York Street car park - the Leader's 'Team' assured us that the rubbish was to be removed by the York Street Medical Practice!! Came as a bit of a shock to them I can assure you. This latter has now been sorted out and the former is in Phil's capable hands.

I would like to take this opportunity to thank the Technical Committee, Mary, Jenny, Phil, Derek and Andy, who replaced Peg Peil earlier this year.

Ann Yorke - Technical Office

PROPOSED CLOSURE OF COURT OAK ROAD POST OFFICE

On 24th June Post Office Limited announced the proposed closure of Court Oak Road Branch Post Office as part of yet another phase of closures in Birmingham.



This follows close on the heels of the closure of Prince's Corner, Moorpool and Harborne Lane Branch Post Offices. Public consultation ends on 4th August.

All along, whatever the economic arguments, the programme of closures in Harborne has seen local residents cynically duped and misled. When consultation took place in respect of Prince's Corner Post Office in August 2003, the Moorpool and Court Oak Road post offices were proffered as alternatives to meet the needs of displaced customers. All representations against the closure were ignored and Prince's Corner closed on 8th November, 2003. Unbelievably, just 16 weeks later, Post Office Limited shamelessly announced the proposed closure of Moorpool Post Office, again declaring Court Oak Road Post Office as a suitable alternative along with Bearwood Post Office. Moorpool closed in summer 2004 and incredibly Bearwood closed in April 2005. Now Court Oak Road is set to close. The Society has, of course, strongly opposed the latest closure especially bearing in mind the use made by students with disabilities from Queen Alexandra College. However, we are not hopeful, as previous experience has shown the "consultation" to be a charade, a complete sham.

Phil Stokes

Chairman's Letter Summer 2008

Once again we present a newsletter intended to reach all Harborne residents and people who have an interest in Harborne.



Do you like living in Harborne? I do. I shall have lived here for fifty years this summer and I should not like to live anywhere else.

Why do I say this? Well., although we can reach the city centre easily we can come home to a green, attractive village. Yes, it is still a 'village' to many of us. It is a green area with its parks, golf courses and trees. The many restaurants keep the High Street alive and busy in the evenings. There are many non retail outlets if you need them. But there is one thing I would like to see change and that is the number of small retail shops. I can think of many of these outlets that we have lost but if we want to replace them we must use them especially when a new one opens up.

The articles in this newsletter will tell you all about what the Society has been doing over the past year, for example the work done to make sure the new swimming pool is built on the present site, the upgrading of our parks and the addition of another Conservation Area - we now have three! We have given money towards the Christmas lights and to the upgrading of the bench seats opposite the Clock Tower.

Another new project has just come up - the possibility of the refurbished statue of Thomas Attwood coming to Harborne. As he lived much of his life here that seems very appropriate to us and we will do everything to see that this happens - perhaps we could combine this with The Harborne Society's fiftieth anniversary in 2010.

Don't forget our speakers' meetings (see back page). We do have many knowledgeable and often amusing people to talk to us and it makes an interesting and friendly night out.

I should like to thank all the officers, committee members and members who have helped over the past year. I should particularly like to mention two of our members who have been committee members and officers of the Society. Mary Lambourne was 90 last May and Jean Curr will be 80 in August. They both still help with the newsletter distribution.

We hope that you will find this newsletter of interest and will be encouraged to join us. Details of how to become a member, along with membership fees, are printed on the back page. Harborne is our inheritance and our responsibility.

**Yours Sincerely,
Mary P Abbott Chairman**

Police Consultative Panel

Ann Yorke is the Chairman of the Harborne Police Consultative Panel which meets bi-monthly on the same evening as the Neighbourhood Watch meeting. Harborne is policed by the Harborne East Neighbourhood Policing Team based at Rose Road. The web site is www.westmidlands.pnn. This year there have been some significant arrests and overall there has been a crime reduction of 16/17% - about 250 less crimes - this year - that is looking at all of the categories. The OCTV camera on the Parade is still not functioning properly, parking and speeding were still giving the general public headaches but after discussions about parking on pavements it was generally agreed that the police were doing sterling work on burglaries, car theft and other matters. The general public can still send photographs of parking offenders cars and action will be taken. To reiterate, don't leave anything on show in your car, rub off any marks on the windscreen which indicate that you have a Sat Nav, put your money away before you walk down the street and take your car keys to bed with you. Notices of the meetings are posted in the High Street Post Office.

Do come and see what goes on at the meetings, it gets quite lively at times.

*Ann Levitt Chartered Architect
PDipl CPM Dip Arch (Birm) RIBA*

*98 Greenfield Road
Harborne
BIRMINGHAM
B17 0EJ*



*Tel/Fax: 0121 604 7364
Mobiles 07711 953 314*

*FREE INITIAL CONSULTATION
REALISTIC FEES THEREAFTER*

A local Harborne architect

QUEEN'S PARK & GROVE PARK IMPROVEMENTS



Last year's Summer Newsletter reported in detail on the prospect of improvements to Queen's and Grove Parks, issues on which the Society has been campaigning for over ten years. It is very pleasing to be able to report that in the last twelve months there has been considerable progress on some issues, regrettable delay on others and one very exciting new proposal.

The biggest delay has been the provision of the brand new children's play areas promised for both **Queen's and Grove Parks**. Last July we were assured that both schemes would be in place by Christmas but that did not happen. Several new target dates came and went. However, by the time you are reading this work on both schemes will have started with completion by early August at Queen's Park and later in the month at Grove Park. Another idea currently being considered for both parks is the provision of a multi use games area although this is still in its early stages.

The drawn out work on de-silting the pool in **Grove Park** and restoring the banking and paving was hampered by water continuing to run into the drained pool from underground springs but the scheme was successfully completed and the landscaped area seeded by the end of March.

At the time of writing the promised new litter bins and benches have still to be provided. The future of the Coach House severely damaged by fire in 2006 has remained under consideration by officers although local residents and the Society were consulted at the end of last year. The Society's view was that it should be repaired and brought into use as [day time] toilets and accommodation for the Park Warden but the cost is likely to be prohibitive. It is hoped that a report will be submitted to the Ward Committee on 28th July.

At **Queen's Park** a site meeting on **7th June, 2007**, to secure modifications to the "improvements" carried out earlier in the year, resulted in a willingness by officers to consider the suggestions made and to draw up estimates but very disappointingly detailed proposals have yet to appear and at the time of writing there is no indication of when that will happen. On the plus side, additional new benches, litter bins and new/replacement 'dog bins' were installed in February/March. On the down side, in March the nets and posts were stolen from the three tennis courts. The Council to its credit quickly replaced them using spare posts and brand new nets but the thieves returned just days later and stole the new nets, no doubt stolen to order or destined for sale on the internet. These courts are some of the very few free public courts in the whole of the city and are always very well used in the summer months. We have requested the Council to try and come up with an arrangement whereby the Grounds Maintenance staff and the part-time Park

Warden might be responsible for erecting and removing the nets on a daily basis during the summer. Is a full-time Park Warden too much to hope for?

Also at **Queen's Park**, the drainage work undertaken south of the car park and around the former pond has unsurprisingly proved ineffective. The ground remains permanently boggy and with surface water whenever it rains creating a sterile and largely unusable area.

This, however, has resulted in a great idea to turn most of this part of the park into a "water meadow" conservation area by using the natural contours of the land, some limited landscaping and planting appropriate varieties of plants and trees, such as pin oak, silver birch and weeping willow. The idea is in its formative stage and will evolve over two or three years but it is a very exciting proposal. There could be an interpretive display board with the site being used by children from local schools, possibly working with staff from Woodgate Valley Country Park. If possible, it is hoped to start work this Autumn, including some initial tree planting as part of the 'Birmingham Trees for Life' scheme with which the Society is already involved. Drainage problems have also arisen on the main park area and so consideration is being given to a scheme to divert the water towards and under the main path into the proposed wetland. The Society

has been consulted and strongly supports this very imaginative proposal.



Phil Stokes

Sue Howells Art



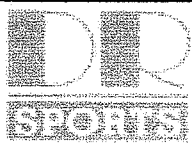
No. 2 Gordon Road, Harborne Birmingham B17 9HB
 Gallery Tel: 0121 426 5697 Office Tel: 0121 426 3241
 email: garyhow@hotmail.com www.suehowells.co.uk

A&S Window Cleaning Services
 Domestic, Business and Commercial



For details of all our services call
 Dean on:
 0121 476 4367
 07967 087352

zdsheppard@blueyonder.co.uk



Regatta



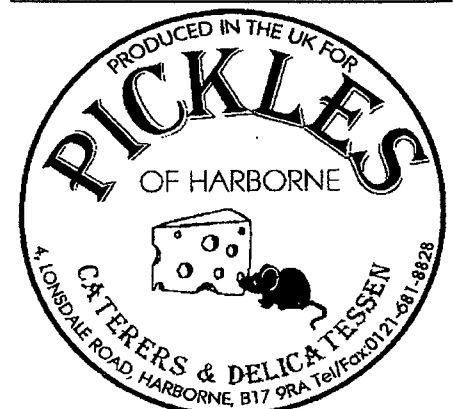
Quality sportswear
 Branded menswear

Equipment and luggage
 We also offer specialist

Equipment for pilates and yoga
 Please ring: 0121 426 2737



76 High St. Harborne, B179NJ



TIME FOR THOMAS ATTWOOD TO COME HOME?

Over the Society's forty-eight years there have been many campaigns ~ some short ~ some long ~ but none as long as our campaign seeking the relocation of the statue of Thomas Attwood to its rightful place ~ Harborne. This campaign started in 1974!

Thomas Attwood was a radical advocate of economic and political reform by non-violent means who in December 1829 founded the Birmingham Political Union for the Protection of Public Rights. This led to Political Unions being established in other major towns across the country which, ultimately, resulted in the Great Reform Act 1832, one of the most significant pieces of legislation in British history that ended some of the worst injustices of the corrupt electoral system. "Rotten boroughs" with few, if any, electors returned Members of Parliament whilst the growing centres of population and manufacturing, such as Birmingham and Manchester, were not represented at all. At Dunwich in Suffolk ~ half submerged under the sea ~ fourteen electors returned an astonishing twenty-eight M.P.s.

Attwood was born at Halesowen in 1783, the son of a wealthy steelmaker and Birmingham banker. After attending Halesowen and Wolverhampton Grammar Schools, he moved to Birmingham to join his father's bank. On 12th May, 1806, at St. Peter's Church here in Harborne, he married Elizabeth Carless, daughter of widow Mary Carless who lived at The Grove. Upon marriage he lived first at The Larches in Sparkbrook for about five years before moving to The Crescent until 1823. He then moved to live with his mother-in-law at The Grove where he resided for the next twenty-three dramatic years.

Attwood's public career started in 1811 and he won great public esteem seeking to protect Birmingham's trading and employment position. In 1815 he began advocating currency reform and his political activity intensified but, frustrated in that, he saw electoral reform as the way of getting people with experience of trade and economics into Parliament. The Birmingham Political Union was established and its plans presented to a meeting of 15,000 people in Cheapside on 25th January, 1830. Attwood, despite his wealth, was able to unite both the middle and working classes in the desire for reform.

A petition set out the Political Union's demands for reform and, as agitation grew throughout the country, the Reform Bill was introduced in 1831. It was passed by the Commons but rejected by the Lords, rousing fears of possible bloody revolution.

In Birmingham, a huge mass meeting of



Political Unions from across the Midlands was held on 7th May, 1832, on land at Newhall Hill, reputedly attended by 200,000 people but more realistically 80,000. Attwood's non-violent views prevailed. "The sword must not be drawn in England. The terrible knell of the tocsin must not sound. The tears of the widow and orphan must not mark our course".

Within days Lord Grey, a supporter of reform, formed a new Government. This news was greeted with great celebration and a crowd marched to The Grove to plead with Attwood to return to town and address another huge meeting. He agreed and his carriage was pulled along by his jubilant supporters. He travelled to London to meet Lord Grey and returned in triumph with towns and villages along the route turning out to greet him. Thousands were said to have assembled at The Grove.

The Reform Bill was reintroduced and passed by Parliament on 7th June. Birmingham was enfranchised at last! On 12th December Thomas Attwood and his supporter Joshua Scholefield were returned unopposed as Birmingham's first Members of Parliament. He was re-elected in 1835 and again in 1837.

Attwood's time as an M.P. was much less successful. In June 1839 he presented the Chartist movement's petition to the Commons demanding further reforms, including universal suffrage, secret ballots and abolition of the property qualification, but it was rejected and the Chartists issued a call to arms. Attwood's influence had declined and riots broke out in

Birmingham. Disillusioned, he resigned as M.P. in December 1839 and retired from public life. His wife died but he remained at Harborne until 1845, when he remarried, then lived briefly at Allesley before moving to Malvern. He died on 6th March, 1856, and was buried in the churchyard at Hanley Castle. One obituary described Attwood as [in 1832] "the most popular man in all England".

A statue was erected three years later in Stephenson Place but in 1925 it was moved to Calthorpe Park. In 1974 the Council proposed moving it to Larches Green Park, Sparkbrook, where Attwood had once lived for a short period. Given Attwood's far greater association with Harborne during which period he was at the height of his political activity and national influence, the Society urged the Council to move the statue to Grove Park instead. In the face of all logic the Council refused.

In 1983 the bicentenary of Attwood's birth was commemorated by the Society providing a stone plaque set in the ground near to the coach house in Grove Park as a reminder that Thomas Attwood once lived there.

The Society has made the Council aware of its continuing desire for the statue to be moved to Harborne, the last occasion being July 2006. Now a new opportunity has arisen. On 6th June the 'Birmingham Mail' reported that because of repeated vandalism the Council intended to move the statue from Sparkbrook for restoration over the next two years and then to a new site to be decided.

The Society wrote immediately to the Cabinet Member for Leisure urging that the statue be located in its rightful place ~ Harborne. Parks are not immune from vandalism and the Council might feel that Grove Park is not a particularly secure environment for the statue. Consequently, we have strongly suggested that a much more prominent location on High Street would be appropriate. The statue would be in public view all day long and OCTV cameras cover the principal parts of High Street. Currently, the Council is looking at several sites in High Street for possible enhancement as identified in the Local Centre Management Framework adopted last year and in the Society's view a major piece of public art would fit perfectly with those aims.

Harborne is proud of its association with the great political reformer and the Society has no doubt that the statue's relocation to Harborne would be widely welcomed by the local community. We hope the Council will support our plea ~ it is time for Thomas Attwood to be brought home.

Phil Stokes

Gwinnett & Burkill Ltd

at 196 HIGH STREET

Next door to SAFEWAY

WE REPAIR AND GUARANTEE

- All watches of quality
- Barometers
- All Clocks including Antiques and Anniversary types
- Grandfather clocks including a collection and delivery service
- All rings made and repaired
- Every kind of jewellery repair undertaken
- Pearls rethreaded and stones supplied and fitted etc.
- We stock and fit every known battery for watches, clocks & calculators
- A professional insurance valuation service available at all times
- We buy your old gold, silver and unwanted jewellery, best prices paid



Your Harborne Jewellers

196 High Street,
Harborne, B17 9PP

Tel: 0121 426 6446



**LOVE & LIGHT
PRESENCE**

Massive Collection of
jewellery, quirky gifts
angels, crystals, oils
& books

(opposite M&S)



**FISHERS
SURVEYORS
& PROPERTY
MANAGERS**

20-22-24 HIGH STREET, HARBORNE
TEL: 0121-428 1000

HIGH STREET RETAILING

Last year's Summer Newsletter contained an article about the High Street and asked whether the revival of High Street had truly started. The Society believed that the signs were beginning to point in that direction following the opening of Sainsbury Local, Drinksworld, Waitrose and the impending arrival of OHO organic foods coupled with the appointment of the Village Centre Manager. Subsequently "Village News" also opened at Prince's Corner.

Sadly, it now looks as though it might have been a false dawn. The recent closure of MFI bathroom, kitchen and bedroom store coupled with the earlier overnight closure of 'Infinity' kitchens in May has been a severe blow to the High Street which is already facing very diffi-

cult trading conditions in the face of the current national economic climate. Lilac Tree craft shop had closed last October but subsequently opened in February as Vogue dry cleaners and Bonds Books has already announced that is to close in August next year.

MFI occupied three retail units and it is the Society's hope that the property owners will be willing to consider dividing the premises into smaller units as one means of attracting new tenants. It is absolutely crucial that the premises are retained for retail purposes and that any attempt to secure planning approval to a change of use to yet more non-retail purposes is strongly resisted. To that end, we look to the City Council to uphold the Retail Frontage Policy for High Street and to refuse

any such planning application.

Banks, estate agents and restaurants etc are beginning to dominate the High Street and at the last count in February the level of occupied retail units on High Street was a little over 51% [just under 42% if you discount hairdressers, manicurists and opticians as not being retailers in the generally accepted sense]. That position has now worsened. 50% is widely regarded by councils throughout the country as the minimum level of retail provision before the vitality and viability of a shopping centre is affected so very clearly our High Street ~ your High Street ~ is now "at risk".

Once again we urge everyone of you to patronise your High Street shops.



Phil Stokes

Peter Hollingworth - longstanding member of The Harborne Society and City Councillor for many years, looks back at his youth in Harborne at the start of the Second World War.

**Harborne Youth
Service Corps**

Early in the Second World War, late 1939 or early 1940, Canon Richardson of St. Peter's Church called at my home, 24 Wentworth Road to tell us he was forming a group for all 14 - 18 year olds in the village and hoped that I would join in. Mum had reservations as he was C of E whereas we were Methodist but he assured her that this would be for all youngsters regardless of religion.

I decided that I would join and was immediately made Group Leader for the Wentworth Road area. He promised to let me know the names of the other members in my 'patch' when he had recruited some more.

We met in a large Meeting Room at the back of the old vicarage (now the church car park) with the Rev. F. E. Compton, known affectionately as Effie, in charge of us all. Gradually we developed a programme of activities covering most nights of the week but always ending with a Social and Dance where we got to

know each other as new members joined.

I remember map reading, first aid, knots and splices and gardening for old folk among the activities and later, some of us acted as cycle dispatch riders taking messages to Air Raid Warden's posts.

About 1941 Effie contacted a Mr Archer who had a fruit farm at Ashton Under Hill, near Evesham, and we started Summer Camps there the boys sleeping in bell tents and the girls in a barn. We spent many happy hours picking plums and having camp fires and climbs up Breedon Hill in our 'free time'. Each Saturday a fresh group would cycle down to the farm as last weeks lot cycled home. By then I had become General Secretary and often had to lead the column there and then lead the return batch home. I think at the peak we numbered over 300 members and many good friendships developed. Even now, over sixty years later, I meet old members in the High Street.

Peter Hollingworth.



TRAFFIC MANAGEMENT ISSUES

War Lane Traffic Island In

November 2005 the Society approached the Council expressing road safety concerns about the traffic island at the bottom of War Lane at the junction with Fellows Lane, Victoria Road etc. The island was densely planted with substantial shrubs and trees which were so large that the visibility of drivers and pedestrians approaching the junction was severely obstructed. We asked the Council to consider remodelling the planting completely smaller planted areas with flower beds in place of shrubs as is the case with all the other traffic islands in the area.

The issue dragged on as Highways officers considered the cost to be too expensive but we pressed the matter via the Ward Committee purely on road safety grounds. Happily, it was eventually agreed that work should be done as we had sought, together with the shrub area along the Northfield Road frontage, but we were unable to convince the Council to provide even a modest degree of flower beds. The island was cleared and turfed in February with four existing trees left in place. In addition, to assist people in crossing War Lane, the central reservation on the approach to the island was widened.

The Society is extremely pleased with the outcome and now everyone can at least see the potential danger rather than trusting to luck. It is just a pity that the Council did not provide a modest number of flower beds. They might appear at a later stage but no financial provision has been made for flower beds and their maintenance, approximately £2-3,000 a year. The planting is available for sponsorship although the discrete signs seeking sponsorship were removed when the work was carried out and have not been replaced.

St. John's Road When the traffic regulations covering the High Street and certain side roads were reviewed in 2005, there were proposals for St. John's Road to be brought into line with all the other side roads by removing the lunch time changeover from which side of the road limited parking was permitted. Mystifyingly, despite public consultation supporting the idea, the proposal was not adopted and I have never been able to establish the reason why. In addition, the situation in the road is now a total farce and despite the dou-



ble yellow line no parking restrictions the road is constantly used for illegal parking and it is common to see up to eight cars parked between High Street and the exits from the car parks. Unfortunately, Blue Badge holders appear to be the main offenders who park regardless of the fact that they are clearly causing an obstruction which is in contravention of the conditions of the issue of the Badge. The Traffic Warden is not able to take action against Blue Badge holders and consequently the Police have had to take action. A Blue Badge is not a licence to park anywhere. The current situation is totally unacceptable and it is time that the Council addressed the issue as a matter of urgency.

Margaret Grove/Moorpool Avenue [part] One-Way System

The late lamented 1997 Harborne Traffic Management Plan was abandoned by the City Council in March last year as fully reported on the front page of last Summer's Newsletter. That Plan included proposals for a one-way system in Margaret Grove and part of Moorpool Avenue to ease the severe traffic congestion and to stop the gross damage to the grass verges. Once the proposals in the Plan for High Street and its side roads together with the Greenfield Road one-way scheme had been implemented the Society repeatedly pursued the case with the Council and each time we were assured that the proposals for the Moorpool Estate would be the next phase to be carried once funds were available. That never happened. The situation in Margaret Grove worsened year on year and the damaged state of the grass verges is shocking. When the possibility of Section 106 funding for the scheme from the Moorpool residential development proposals disappeared the Council finally agreed to consult local residents once again. The result was overwhelming support for implementation of the full 1997 proposals for Margaret Grove

and Moorpool Avenue rather than a cut down version for Margaret Grove only.

We are extremely pleased that the full scheme is now to go ahead subject to completion of the formal statutory public consultation procedures which are likely to take place in July/August.

Phil Stokes

The Harborne Society Website

www.theharbornesociety.org.uk

Our ambitions for the Harborne Society website when it was launched back in 2004 were modest. Our key aim was to keep members and the general public informed about the Society's activities.

A feature we included early on were links to other societies, groups and sports clubs active within the Harborne area. This is an area which, as the site editor, I am keen to keep up and develop as well as keeping members informed about the various committees that help the Society function. People who advertise with us in our summer magazine also get a listing with hyperlinks to their business sites where available.

I have also drawn together a list of websites which I hope are of interest or direct concern to the residents of Harborne. Apart from links to Harborne churches, sports and activity clubs, I am trying to have links to pages on Birmingham Council's website which directly concern Harborne. These pages give details about council ward meetings, planning applications, etc.

I update the information on the site every year following our AGM. Each year has seen more pages being added to the site and this year I am hoping to include past copies of our summer newsletter which is an interesting chronicle of how the forces of change have affected all of our lives over the last decades of the twentieth century.

An area we would like to develop is a map detailing interesting aspects of Harborne and this is an area of development for the 2008-9 update. Google Earth may have stolen a march on us here but I believe that content as well as presentation is all important. The site also has a page of current photographs of Harborne which we need to expand and I hope will give the user an insight into the varied appearance of our surroundings.

An interesting aspect of the site's development is the numbers of visitors who visit the site on a monthly base. In early 2005 we were getting as few as four to five visits a month but this has grown through 2006 to three hundred a month and is now averaging some five to six hundred visits a month, an analysis of the origins of the users shows they originate from the UK, USA, Europe as well as Australia and many other countries so may be past residents of Harborne are researching their roots?

I hope that members of the Society and people in general will find our site useful and I am always interested in any comments that members have to make.

Ray Le Gallais
The Harborne Society Website Manager

West Midland Glazing Co Ltd

Windows, Doors & Conservatories

uPVC, Aluminium, Softwood & Hardwood
Sash windows & Secondary windows

Celebrating 30 years in Harborne

Tel: 0121 426 1275

123-125 Grove Lane, Harborne, Birmingham B17 0QT

Est. 1977
WM
GLAZING
Windows, Doors & Conservatories

FENSA
Registered Company

GGF
Glass and Glazing Federation

VILLAGE CENTRE MANAGEMENT - ONE YEAR ON **Bob Flack**

About this time last year I wrote with enthusiasm about my aspirations, so I guess it's about time to report how much has been achieved and indeed why some things have fallen by the wayside.

First and foremost, I would like to reiterate the support that I have received from businesses and organisations locally, and to this end I must pay special thanks to Paul Burgess, Chris Birdsell, and of course, Phil Stokes. Anything and everything that occurs in Harborne and the immediate locality has their attention, and they are always available for comment and discussion.

You will be pleased to hear that two of my most important tasks have both gone well. I am referring to the Harborne Local Centre Management Framework and the Harborne Business Plan. The former has been a real partnership delivery, with the School of Architecture at Birmingham City University working closely with pupils from Harborne Hill School. Together they have addressed the six sites for public realm improvement along the High Street, and the work completed was brilliant. That has now gone back to the Urban Design Team at the City Council for inclusion in the paper that they are producing.

The latter project was undertaken through consultation with all interested stakeholders. In essence a business survey form was sent to all local businesses for completion. The data gathered from these responses was incorporated into a draft Business Plan which was presented to the Harborne Village Centre Partnership on June 23rd last. Since that date, I have made some minor amendments and the document is now in the public domain. Essentially, it shows quite clearly the projects which the Partnership will be undertaking within the next 3 to 5 years, and the funding required for this to become a reality.

In truth, funding has now become a real

issue. All District Centre Partnerships within the city, which are currently eight in total, all suffer from either funding difficulties and in some cases sustainability of contracts. To this end, Paul Burgess, as Chair of the HVCP called a meeting recently which was chaired by Councillor Summerfield to look at how these key issues could be addressed, and any possible intervention initiatives which could assist with funding in the longer term. This meeting was extremely fruitful, and these issues are currently being addressed centrally by the local authority.

On the business front, nationally this is becoming the most difficult year for retailers in a whole decade. Unfortunately this has already resulted in a couple of businesses closing recently, but all in all we are still well above the national average in relation to vacant properties.

Another aspect was the success of the Christmas lights, which were brand new and very well received by everyone. The switch-on event started off well, but due to torrential rain this had to be completed inside the Varsity. This must have been a first, but Nick Owen and Jimmy Franks as two good professionals entered into the spirit of the evening which was appreciated by everyone. On the flip side, I was badly let down by the operator of the ice rink, who didn't carry out what was promised. The outcome of this was that hundreds of local children were extremely disappointed, and I went on record to apologise for this situation.

On the events front, the planned Craft & Antiques market did not materialise, but I will be working hard to see if there is any way we can introduce such a theme in the future.

So like all partnerships, a lot was achieved but there were some disappointments. However, in my experience, this is not unusual and I believe that we can all be proud of how quickly everything is coming together.

When I report again next year, I want to tell you that the Partnership is growing stronger and that we have begun to carry out projects from the Business Plan. So, here's looking ahead to that.

Harborne Church Farm Golf Course Open to the public

9 hole course

Cafe

Hire equipment

Fully stocked shop

Golf lessons

All welcome

For more information:

Tel: 0121 427 1204

email: golfteam@msn.com

Vicarage Road,
Harborne
B17 0SN



John Shakespeare Weddings & Events Photography



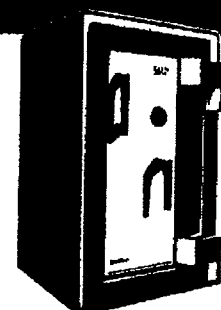
www.johnshakespeare.co.uk

0121 427 5799

SAM'S MOTOR REPAIRS
FORMERLY OF STATION RD, HARBORNE
FREE COLLECTION AND DELIVERY SERVICE
MOT REPAIRS & SERVICING
0121 434 5501, 07976 234048.

E.J. DAWSON

ESTABLISHED 1867



LOCKSMITHS
SAFE DEALERS
ALARM TECHNICIANS
KEYS CUT
LOCKS FITTED

160 Gordon Road, Harborne
Birmingham B17 9EY
Telephone: 021-427 7200

Have you a story to tell or a personal interest in Harborne's history that you would like to share? Email maryworrall13@hotmail.com.

This article about the history of Harborne Fire Station was contributed by an ex resident John C. Thompson whose father was a Fireman at the Harborne Station. As a child John lived behind the Station in house number three and attended Station Road Infants' and Juniors. We are grateful to him for this most interesting article.

A History of Harborne Fire Station

John C. Thompson

One of the earliest references to the setting up of a Fire Brigade in Harborne was in 1879 following a disastrous conflagration known as the "Digbeth fire" when a volunteer organisation came into existence a few months after. Until that time there had been two small hand pumps kept at the Police Offices, the Local Board Foreman of Roads being in charge, who held the key to the store place, not a satisfactory state of affairs as it could not always be found! A public meeting was held and a resolution passed calling upon the Local Board to provide some fire appliances and enlist a Fire Brigade. Some small appliances were provided and eight volunteers came forward to act as firemen with Captain Chas. T. Hart taking command. By 1880 the population of Harborne was about 5000 and to improve the fire protection of the area a manual engine was secured in 1881 and also the Brigade increased to 12 men. Arrangements were made with a member of the Brigades to provide two horses to pull the engine. Following an appeal to the ratepayers funds were collected to provide electric bells in the houses of the firemen.

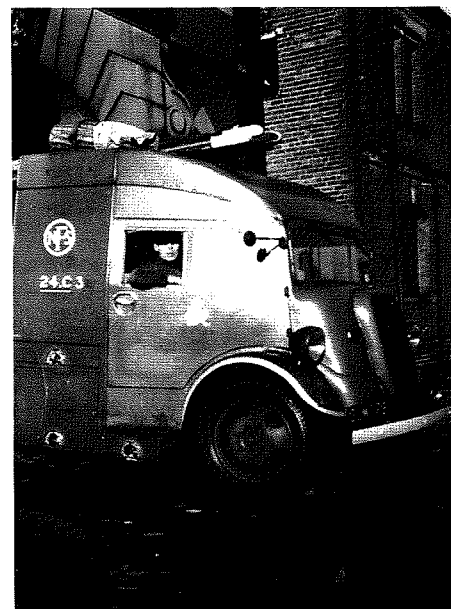
Following the rapid growth of the Village, Harborne was absorbed into the City of Birmingham and the Harborne Volunteer Firemen paraded for the last time on November 5th 1891. From that date the responsibility was in the hands of the Birmingham Watch Committee. By 1899 the Chief Officer Mr. A.R. Tozer expressed his growing concern in the lack of suitable fire protection in parts of the city, Harborne being one area and in February 1901 it was agreed to purchase about 558 sq yards (adjoining the local police Station) for the purpose of erecting a fire station, however, it was later found to be unsuitable and the question was again dealt with in 1905. At the October 1905 meeting it was agreed to acquire a piece of land at the junction of Rose Road & Station Road containing about 2,461 Sq yards, at a cost of £615.5s.0d.

Sadly at the Watch Committee meeting on the 12th June 1906 the death of the Chief Officer was reported with deep regret (Mr A.R.Tozer). It was recommended that the Second Officer, his eldest son, be appointed as his successor. The foundation stone of the Harborne Station was laid by Councillor Arthur Godlee on the 2nd of October 1907 and the Station declared open by Miss Godlee

on the 4th of August 1908. The cost of the building amounted to £9,098. The station was equipped with two horse drawn Escape Tenders fitted with soda acid extinguishers, each pulled by two horses, in total there were eight horses on the station. The horses on duty were housed in stables on each side of the Engines and when there was a fire call the stable door was released and they trotted out. The harnesses were lowered by a pulley arrangement by the Dutyman who could see into the Engine House from the Watchroom. The rest of the horses were kept in the stables at the rear of the Station. Six three storey houses were provided for the married firemen at the rear of the Drill Yard. A house for the Station Officer was provided on the left of the front of the station, a large flat was provided and used by the Divisional Officer above the Watchroom, single quarters for six firemen were provided on the top floor.

Most of the horses in the Brigade were phased out by 1914 and Motor Fire Engines took over. The stables in the Engine house were turned over to other uses and the stables in the yard converted into a cottage. The Station settled down to a fairly quiet existence, and compared with other stations in the Brigade which could be very busy it became known as "The Convalescent Home", this all changed in 1938, as war clouds gathered and many changes took place. A concrete Air Raid shelter was built in the rear gardens of the Firemen's houses and the workshop, beside what had been the stables, was demolished and an 'Anti Gas Decontamination Centre' built. By the time of the outbreak of war in 1939 the whole of the front of the Watch Room had been covered with sandbags and the internal ceilings supported with timber and steel girders. The Watch Room became a secondary Main Control Room for the whole the Brigade and more telephone lines installed, many more personnel were posted to the Station and two houses in Gordon Road opposite the Station were taken over, and for the first time females took over Control Room duties.

Several other Auxiliary Fire Stations were established in Harborne at this time, the All Electric Garage in Greenfield Road near the Royalty Cinema was a very early one, others were in Wentworth Road, and the one time Boys' Private School "Penryn" on the junction of



Bill Thompson at the controls of an NFS 'Heavy Unit' Fordson Pump - Harborne Fire Station 1945

Somerset Road & Richmond Hill Road, also became one, which later became an Area Fire Service Training Centre.

In 1941 the whole of the Fire Services in the United Kingdom were Nationalised and Harborne Fire Station became part of the National Fire Service: Number 24 Area Fire Force:"C" division, 3 sub division, Station "W". In 1948 the Fire Services returned to the control of the Local Authorities and Harborne Fire Station became known as Station C3 in the new City of Birmingham Fire & Ambulance Service. In 1974 the City of Birmingham Fire & Ambulance Service ceased to exist and Harborne Fire Station became Station C2 within the new "West Midlands Fire Service" remaining functional until 1997 when the new Fire Station at Woodgate Valley opened. The Old Station a Grade II listed building was sold to Tantell Construction for £300,000 it has now been turned into homes for young professionals, fortunately the imposing exterior has been retained.

About the author - John Thompson

My father, Bill Thompson, joined the City of Birmingham Fire Brigade in March 1925, and first served at Lingard Street Fire Station moving to Aston (Ettington Road) Fire Station Married Quarters in September 1928. I was born there in October 1928. My father went on to serve at a number of other Fire Stations in the City before moving to Harborne in March 1935, house No3 to the rear of the Station. I first attended Station Road Infants' School, then High Street Junior School and finally Station Road Senior Mixed School. I also attended the Art School at Station Road before moving on to the Central Technical College

During the War years, just as soon as I was old enough, I was enrolled as a Fire Service Messenger, my job being to guide incoming reinforcing Fire Columns to rendezvous points in the City.

Q~WHEN IS HARBORNE WALKWAY NOT A WALKWAY? A~WHEN IT IS A "WITH CYCLING PERMITTED" ROUTE.



In 2006 the City Council initiated public consultation on a draft Rights of Way Improvement Plan which included several paths in Harborne. The matter was not submitted to the Ward Committees despite being the most obvious vehicle for consultation. The Society submitted comments and objected very strongly to the suggestion that Harborne Walkway should be a bridleway and a cycle route with a tarmac surface and, possibly, lighting. Nothing further was heard so last September the Society was astonished to discover that the Council had fact approved plans for the "improvement" of the Walkway without directly consulting the local community on the final proposals and without even informing the Ward Committee.

The Harborne Branch railway line was axed by Dr. Beeching in November 1963. It was bought by the Council in 1975 and developed specifically as a pedestrian urban walkway and nature trail. It was opened in November 1981 and the Planning Department published a leaflet about it in conjunction with the Urban Wildlife Group. Part of the route adjoins the West Midland Bird Sanctuary and Nature Reserve off Pereira Road and opening up the Harborne end as a cycle route would be detrimental to the bird sanctuary and conflict with the Council's Unitary Development Plan which says that the Walkway should be protected as a Site of Importance for Nature Conservation.

The Society sought to establish just what had been approved but, as always, securing written information was difficult. It appears that our local councillors had been consulted at the time and, whilst

supporting repairs and improvements, including improved drainage, they had opposed the provision of a hard surface and the intention to make the Walkway a formal cycle route.

Officers modified the plans by removing the proposal for a hard surface but, notwithstanding the Society's earlier objections and those of our councillors, had pressed on with the proposal to permit cycling. It transpires that at the behest of just one single member of the public, the Walkway had been added to the Definitive Mapping Statement as a footpath "but with cycling permitted" on the basis that as cyclists had not been restricted in its use the Walkway was deemed to be a dedicated highway for pedestrians and cyclists! What nonsense! The Walkway was never ever intended to be a cycle route and was never promoted as such. I challenged officers to produce any report to a committee of the Council in the 1970s ever indicating that the planned Walkway was intended to be used by cyclists and offered to donate £50 to the Lord Mayor's Charity if they could.

So far, no takers!

The Society, whilst obviously supporting the improvements finally agreed, remains opposed to the Walkway being a permitted cycle route and considers that the stretch from Park Hill Road to Hagley Road, should have been left in its natural state as always envisaged. The Ward Committee in January agreed to object to the Walkway being classed as a cycle route on official maps but the decision had already been taken last September without the public's knowledge.

Phil Stokes

The Harborne Society visit to Bournville Carillon

Following a fabulous talk by Arthur Casey about the Carillon at one of the Society meetings, our Membership Secretary, Jenny Buchan arranged for a group of 22 members to visit the Carillon in Bournville, have a guided tour and watch as it was played.

Monday 9th June turned out to be a glorious sunny evening and the group met at the visitor centre on The Green at Bournville. This was a pleasure in itself as I had no idea that this lovely and historic little building, called The Rest House, was open to the public. It has been open since 1997, serves as a focal point for the Carillon and is well worth a visit in its own right.

Carillons are a rarity in England. They are most often seen in The Low Countries -

Belgium, Holland and Northern France, Bruges being the most famous of them all. The Bournville Carillon was installed by George Cadbury in 1906 after he had seen the one in the Tower at Bruges. It originally only had 22 bells which summoned the local children to school but now boasts the full complement of 48 bells played from a baton keyboard situated in the tower. We were pleased to be introduced to the Carillonneur, Trevor Workman, who was appointed in 1965, and who delighted us with a demonstration of how the bells are played - quite an experience when you are actually standing next to them on top of the tower!

There was a time when an automatic playing mechanism was used, consisting of two interchangeable drums rather like the mechanism of a musical box. These were silenced in World War 2 and allowed to fall into disrepair but some of the machinery and the perforated paper bands still exist and can be seen in The Clock Room.

Not only is the Carillon a wonderful recital musical instrument but it rings the time every day, both on the hour and the quarter hours. Fortunately for the local residents it is managed in 'The Clock Room' and has an intriguing mechanism that makes it keep perfect GMT or BST time and prevents it from ringing during the night.

If you have a spare afternoon or evening go and listen to a recital on The Green or indeed take the guided tour.

You won't be disappointed.



Thelma Osbourne

HERITAGE DAY WALK ~ 14th SEPTEMBER

The Society will again be participating in the national Heritage Open Days, coordinated by The Civic Trust and English Heritage, with another of Edward Chitham's hugely popular guided walks.

Edward's walks over the last twelve years have covered just about every nook and cranny in Harborne so this year's walk will be based on an entirely new theme, namely

'Harborne Schools: Past and Present'.



The leisurely walk will take place on Sunday 14th September starting at 2 p.m. from St. Peter's Church car park and should last about two and a quarter hours. The event will take place whatever the weather so be prepared for the worst! Everyone is welcome. Don't forget, Edward's widely acclaimed book 'Harborne: A History' can be purchased from Harborne Library, Bonds Books and W. H. Smith.

Phil Stokes

Vintage Images Calendars

OLD HARBORNE

- 2009 edition published in September
- 12 wonderful old views around Harborne
- Great value at £5.99
- See website for further details plus calendars for other areas
- www.maxamcards.co.uk
- Maxam Publishing 0121-429 6369

REPORT OF THE A.G.M.

The 48th Annual General Meeting of the Society was held on 28rd May, 2007, at Harborne Primary School but there was a very disappointing number of members in attendance, the lowest in the Society's history.



Reports from the Chairman, Technical Officer and Honorary Treasurer demonstrated the continuing high level of activity during the year on behalf of Society members and the wider local community. The overriding issue had remained the Society's continuing campaign for the redevelopment of the Swimming Pool and Fitness Centre on the existing site in Lordswood Road. However, that was not at the expense of other significant issues including the continuing campaign for improvements and play areas at Queen's Park and Grove Park, the decline of retailing on High Street, the Harborne Local Management Framework, a host of planning issues, most notably the Moorpool Estate, and the proposed Greenfield Road Conservation Area. Membership had fallen slightly but remained strong and consequently the Society continued to be in a very sound financial position despite our financial support for the Christmas lights and the restoration of the benches on the main shopping forecourt in High Street and paying for the Harborne Railway Signal Box display at the Library.

All members of last year's Committee stood for re-election and they were duly appointed, which still leaves two vacancies. Please contact the Chairman if you are now willing to serve. The full list of Committee members and officers for 2008/2009 is on the back of this Newsletter.

The formal meeting was followed by refreshments and a quiz (reproduced below) which was won by Margery Elliot.

Phil Stokes

Name Games

Below are 20 anagrams of roads, streets etc. in Harborne.
Can you unscramble them? Answers on back page.

1	A ROAD ROCK OUT	11	ADORE REPAIR
2	THAWED WORN ROT	12	A WHEAT PASTY
3	RAGTAG REMOVER	13	AWAKE OTHERS
4	CASUAL VENEERS	14	TRY FREELANCE ARK
5	CALENDAR CORE	15	TSAR HAD OVERRUN
6	TREADLE MORE	16	ROARED SO
7	VARIED OLD WOOL	17	TREBLE LUST
8	HURRAH COLD COD	18	RADIANT SOOT
9	OVAL ROMEO ONE UP	19	ARDENT PIONEERS
10	SERRATED POTS	20	ETCH RELIC

Kissing in Birmingham.

Certain Warwickshire customs have been very closely studied both by residents and strangers, who have been very much impressed by the differences between adjacent localities. A good-looking American has lately been "doing" the district, and he has made a note of the following peculiarities with regard to Kissing in different parts. He found that **Bristol Road** girls keep quite still till they are well kissed, and then say "I think you ought to be well ashamed of yourself." A **Stratford Road** Girl, when kissed, closes her eyes in ecstasy, and does not open them again until she is quite sure there is no more. The damsels of **Bearwood** on being osculated timidly suggest a "walk" to **Warley Woods**. The young ladies of **New Street** recognise the "rights of man," receive the chaste salute with meekness, and turn the other cheek. The charming young ladies of **Edgbaston**, when kissed, propose a visit to **Cannon Hill Park**. The girls of **Small Heath** object to be under any obligation, and insist on giving as good as they get. After 57 kisses, a **Corporation Street** girl refuses to have more, and returns those she has already had. A **Bournbrook** girl only allows one kiss for every twelve laps round **Victoria Square**. When a **Harborne** girl is suddenly kissed, she says: "Oh!" very softly, for fear someone should come out and top it. A marriageable maiden of **Handsworth** on being kissed, tries to look stern, fails, then slides her little hand into that of the bold, bad man, and in a voice as soft as **Blanc Mange**, whispers tenderly: "Oh, George, what are your intentions?" A **Saltley** Girl will fall into your arms, and sigh aloud: "Oh, how nice, do it again!" The girls of **Aston** say: "Well, I never thought it of you, and I am very much surprised, and I hope you won't try to do it again, but don't let us stop here where it is light, let us go to Love Lane, where no one will see us."

An early 20th Century postcard reveals some interesting facts...

The Harborne Society Art Exhibition



For some years the Society has had an open Art Exhibition in the Clock Tower during Autumn half-term. This has been on a roughly bi annual basis.

As time has passed by we find it increasingly difficult to sustain this on such a regular basis - so for the moment we are taking a break.

I am sorry that some of you will be disappointed by the loss of an opportunity to show your Art Work this year, but the Art Exhibition Committee is in sore need of a rest.

The Exhibition takes a lot of time and organisation. We have had some splendid teams over the years, who have worked almost around the clock to ensure that the show was the absolute best it could be and the community has been - we believe - extremely impressed! Might I take this opportunity too thank everyone who has contributed to these shows.

We may be back, but I myself do not intend to take the lead in co-ordinating again. It is time for a new initiative! So if you feel interested in helping us, in any capacity, to re-invent the Open Art Exhibition in future years do get in touch.

Mary Worrall,
Editor Harborne Society Newsletter
and Art Exhibition Co-Ordinator

maryworrall13@hotmail.com

Farmers' Market Dates

13th September

11th October

8th November

13th December



URINAL ~ EUREKA!

The City Council is to refurbish and repair the internal area of the urinal alongside the 'Junction' public house. The scheme includes providing a polycarbonate roof, a new quarry tile floor, chemically cleaning the whole structure, cleaning and repointing the ceramic brickwork and overhauling the flushing system.

Phil Stokes



SUMMER NEWSLETTER 2008

OFFICERS AND COMMITTEE 2008 - 2009

Patron

The Bishop of Birmingham

Chairman

Mary Abbott, 'Victoria Lodge',
1 Victoria Road, B17 0AG.
427 1378

Vice-Chairman

Marcia Meyer,
17 St. Mary's Road, B17 0EY.
427 4356

Honorary Secretary

Phil Stokes,
4A Queen's Park Road, B32 2LA.
426 1289

Honorary Treasurer

Brenda Durbin,
28 Harts Green Road, B17 9TY.
427 3170

Technical Officer/Chairman

Technical Sub-Committee
Ann Yorke,
98 Greenfield Road, B17 0EF.
604 7364

Membership Secretary/Chairman

Social Sub-Committee
Jenny Buchan,
50 Margaret Grove, B17 9JL.
426 4854

Newsletter Editor

Mary Worrall,
91 Wood Lane, B17 9AY.
426 6467

Committee Members

Michael Darby 427 19167
Val Harrison 427 2047
Raymond Le Gallais 427 6887
Roger Miles 426 2577
Thelma Osbourne
Andrew Peet 427 7923

ANAGRAM ANSWERS

1. Court Oak Road
2. Wentworth Road
3. Margaret Grove
4. Carless Avenue
5. Clarence Road
6. Elm Tree Road
7. Woodville Road
8. Old Church Road
9. Moorpool Avenue
10. St. Peters Road
11. Pereira Road
12. East Pathway
13. Weather Oaks
14. Frankley Terrace
15. Ravenhurst Road
16. Rose Road
17. Bull Street
18. Station Road
19. Serpentine Road
20. The Circle

**This Harborne Society Newsletter
has been delivered free to over 8,000
homes and businesses throughout
Harborne**

N.B. The Harborne Society
email address for comments,
questions and enquiries regard-
ing any local topic is
harbornesociety@hotmail.com

THE HARBORNE SOCIETY Programme of Meetings 2008-2009

2008

Wednesday 10th September "Do You Fire Clay?" - amusing aspects of
working in a library Mary Worrall

Sunday 14th September - Heritage Day Guided Walk led by Edward Chitham
Harborne Schools - Past and Present
Meet at St Peter's Church Car Park at 2-00pm

Tuesday 7th October Played in Birmingham - Charting Birmingham's
Sporting Heritage Steve Beauchampe

Wednesday 5th November Curiosities of Birmingham Judy Bates

Tuesday 2nd December All the Fun of the Fair - family life and
experiences of those involved Ned Williams

2009

Tuesday 3rd February Going on a what? - Cargo boat cruising down
the St Lawrence Seaway Val and David Harrison

Wednesday 11th March The Story of the Jewellery Quarter
Victoria Emmanuel

Tuesday 21st April Birmingham and the Abolition of Slavery
Malcolm Dick

Wednesday 6th May AGM

All meetings begin at 7-30pm. Tuesday meetings are held at Onneley House,
Court Oak Road:

Wednesday meetings are held in The Conference Room at Harborne Primary
School. The entrance is in Wentworth Road

In addition to the talks the meetings have a short business section so that mem-
bers can be kept informed of local news and committee activities and also can
raise issues of local concern.

We look forward to seeing you. Non-members are most welcome on payment
of a fee of 50p.

WARD COMMITTEE MEETINGS

The dates for meetings of the Harborne Ward Committee for the remainder of the
Municipal Year have not been fixed at the time of going to press
so please look out for posters at Harborne Library.

THE HARBORNE SOCIETY

Are you interested in **Harborne**? Do you value the area and community?

Would you like to keep in touch with issues and developments?
By joining **The Harborne Society** you will be kept informed about
all the issues that relate to **Harborne**

**You will receive three Newsletters each year and
we additionally inform members of important
news and developments at our regular meetings**

**Annual Subscription Rates are - Individuals £5.00
Two or more persons living at the same address £8.00**

To join send a cheque, payable to 'The Harborne Society'
together with your name, address, telephone number,
and email address, if appropriate, to
Jenny Buchan, 50 Margaret Grove. B17 9JL.

